

# Distributed Solar Systems

We are taking proactive steps towards mitigating climate change impacts. Our mission is promoting renewable energy sources and contributing to a cleaner, greener planet.



# DSS Targeted Customers



**Residential  
Local**



**Agriculture**



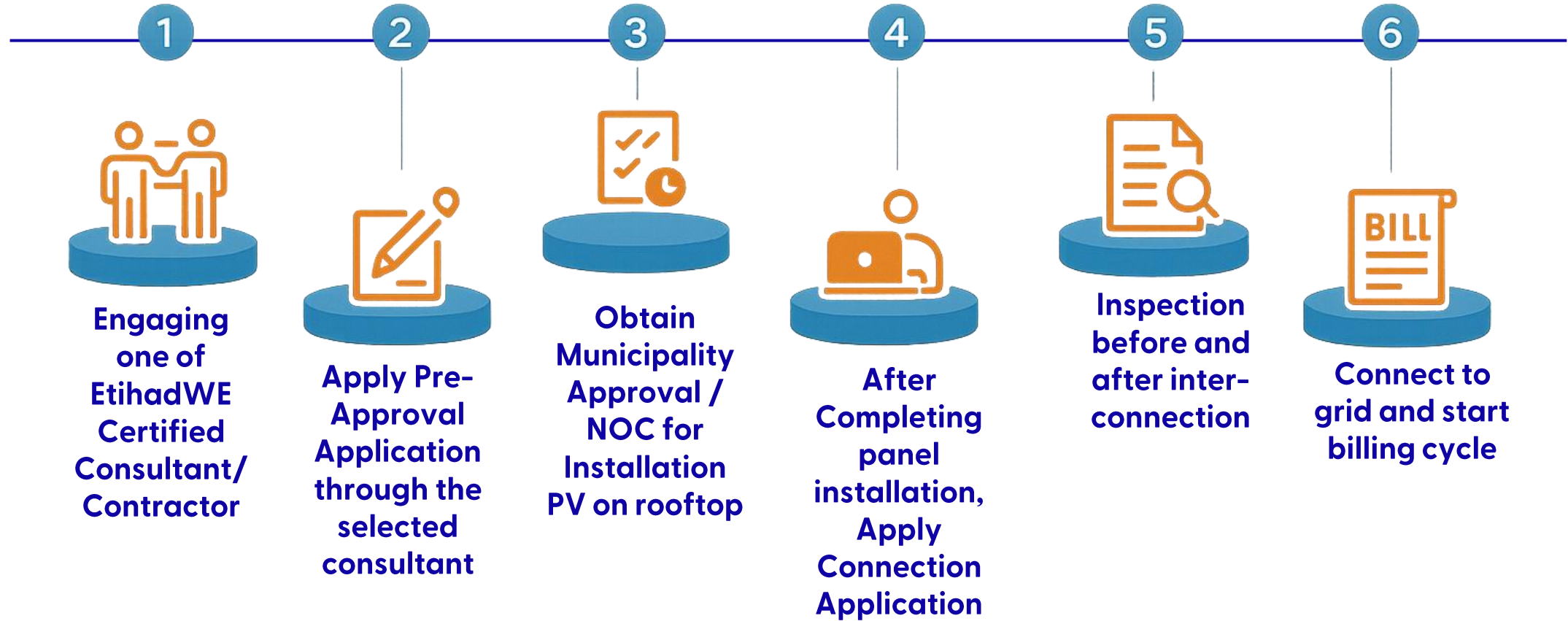
**Industrial**

**10%** Of Total Connected Load

**Max Capacity 1MW**

**Excluded Industrial under MIND**

# DSS Customer Journey

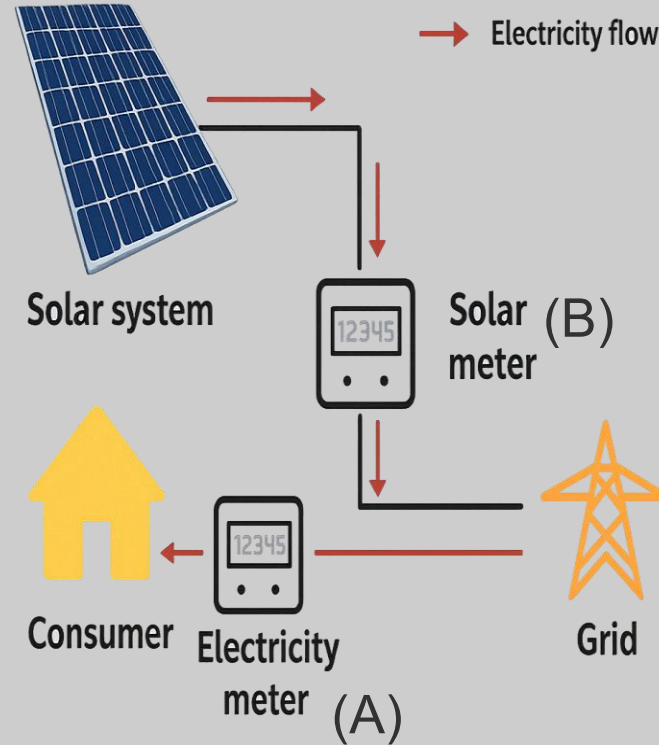


## Connection & Metering

The DSS shall be directly connected to the EtihadWE grid. The Point of Interconnection must be reviewed and approved by EtihadWE.

The DSS will require two smart metering configurations,

- Main Energy Meter (A): tracks electricity imported energy (KWh) from the grid to the customer.
- DSS Energy Meters (B): measures solar energy (KWh) fully exported to the grid.



The screenshot shows a bill from EtihadWE. It includes a table for 'Electricity consumption' with columns for 'Period', 'Consumption (kWh)', and 'Amount (AED)'. The 'Consumption (kWh)' column shows values for 'Net consumption' and 'Gross consumption'. The 'Amount (AED)' column shows values for 'Net amount' and 'Gross amount'. The bill also includes a 'Carbon' section with a table for 'Carbon consumption' and a 'Total' section with a table for 'Total consumption'.

Period	Consumption (kWh)	Amount (AED)
Net consumption	1000	1000
Gross consumption	1000	1000
Net amount		1000
Gross amount		1000

Period	Carbon consumption	Amount (AED)
Net consumption	1000	1000
Gross consumption	1000	1000
Net amount		1000
Gross amount		1000

Period	Total consumption	Amount (AED)
Net consumption	1000	1000
Gross consumption	1000	1000
Net amount		1000
Gross amount		1000

## Invoicing

The DSS will be connected to a single hosting account.

- Electricity production and consumption will be measured through two different meters, "A" and "B",  $Net = (A - B)$ .
- The invoice will be issued monthly by EtihadWE, with both production and consumption (kWh) details included in the monthly statement.





## DSS Installation and Operation

- The customer shall be responsible for installing the DSS and connecting it to EtihadWE network, and it should be rooftop only.
- DSS shall Comply with the EtihadWE guidelines, regulations and safety standards.
- The DSS Customer shall ensure that routine general maintenance for the DSS.
- EtihadWE is not responsible for any loss or damage from DSS connection or disconnection.
- EtihadWE has the authority to disconnect a DSS for network maintenance or grid stability .
- EtihadWE is not responsible for any generation losses incurred by DSS customer for whatever reason .

# Regulations and Guidelines QR



DSS Standards and Guidelines



DSS Conditions



DSS Brochure



For inquiries, please contact EtihadWE through  [Renewable.Energy@etihadwe.ae](mailto:Renewable.Energy@etihadwe.ae)